

MATERIALS AND FINISHES:

SMA CONNECTOR

BODY BRASS  
PLATED: GOLD

CENTER CONTACT BECU  
PLATED: GOLD

FERRULE BRASS  
PLATED:GOLD

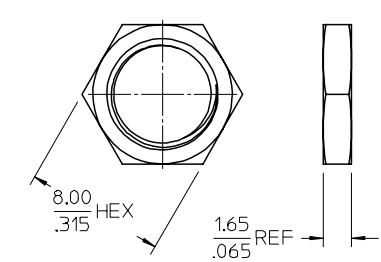
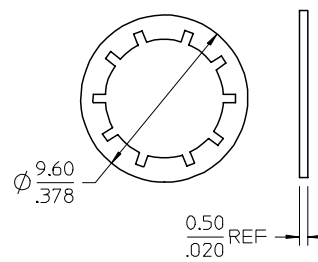
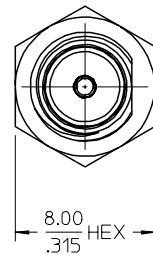
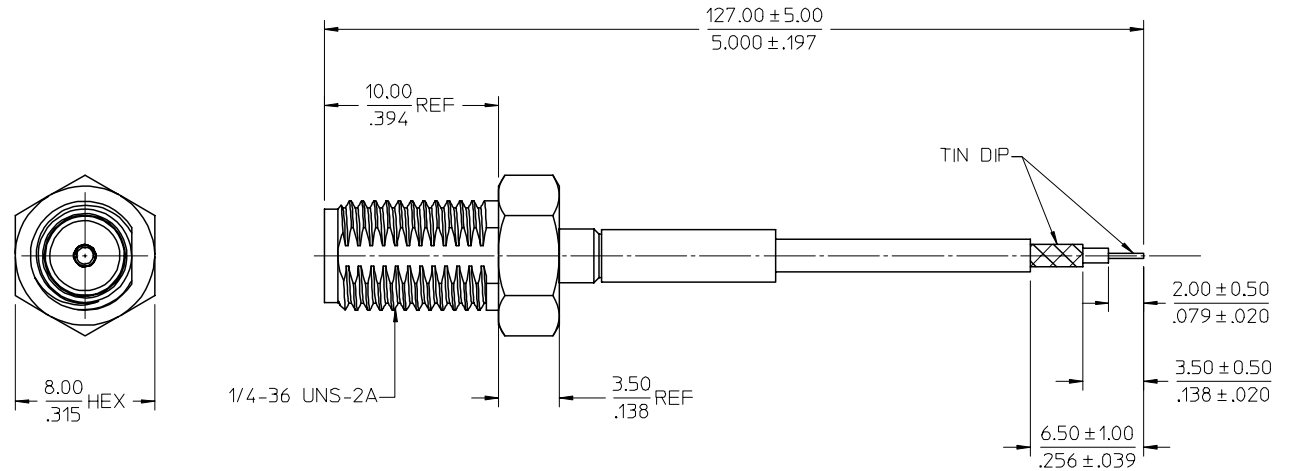
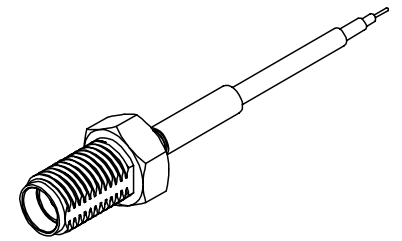
INSULATOR TEFLON

JAM NUT BRASS  
PLATED: GOLD

LOCKWASHER BRASS  
PLATED:GOLD

CABLE  
RG178 CABLE OR EQUIVELENT

HEAT SHRINK TUBE  
COLOR: BLACK



MIL-STD-348A, FIG. 310.1	INTERFACE
SPECIFICATION	DESCRIPTION

NEW RELEASED PD06-108 EIC NO: URF2006-0414 DRAWN: SCHOU 2006/03/29 CHKD: 2006/03/30 APPR: MJIANG 2006/03/31 REV: A	QUALITY SYMBOLS	GENERAL TOLERANCES (UNLESS SPECIFIED)	DIMENSION STYLE	SCALE	DESIGN UNITS	THIRD ANGLE PROJECTION	
	▽=0 ▽=0	4 PLACES ± .005 ± .005 3 PLACES ± .005 ± .005 2 PLACES ± 0.13 ± .005 1 PLACE ± 0.25 ± .005 ANGULAR ± 2 °	MM/IN	MM/IN	METRIC	DRAWN BY JOYCE DATE 2005/12/29 CHECKED BY KERR IE DATE 2005/12/29 APPROVED BY MISEN DATE 2005/12/29	
		DRAFT WHERE APPLICABLE MUST REMAIN WITHIN DIMENSIONS	MATERIAL NO. 897611670	TITLE			SMA J/BLK S/T 50 OHM WITH RG178 CABLE CAL-SMA-J
			SIZE A2	MOLEX INCORPORATED			DOCUMENT NO. SD-89761-167 SHEET NO. 1 OF 1